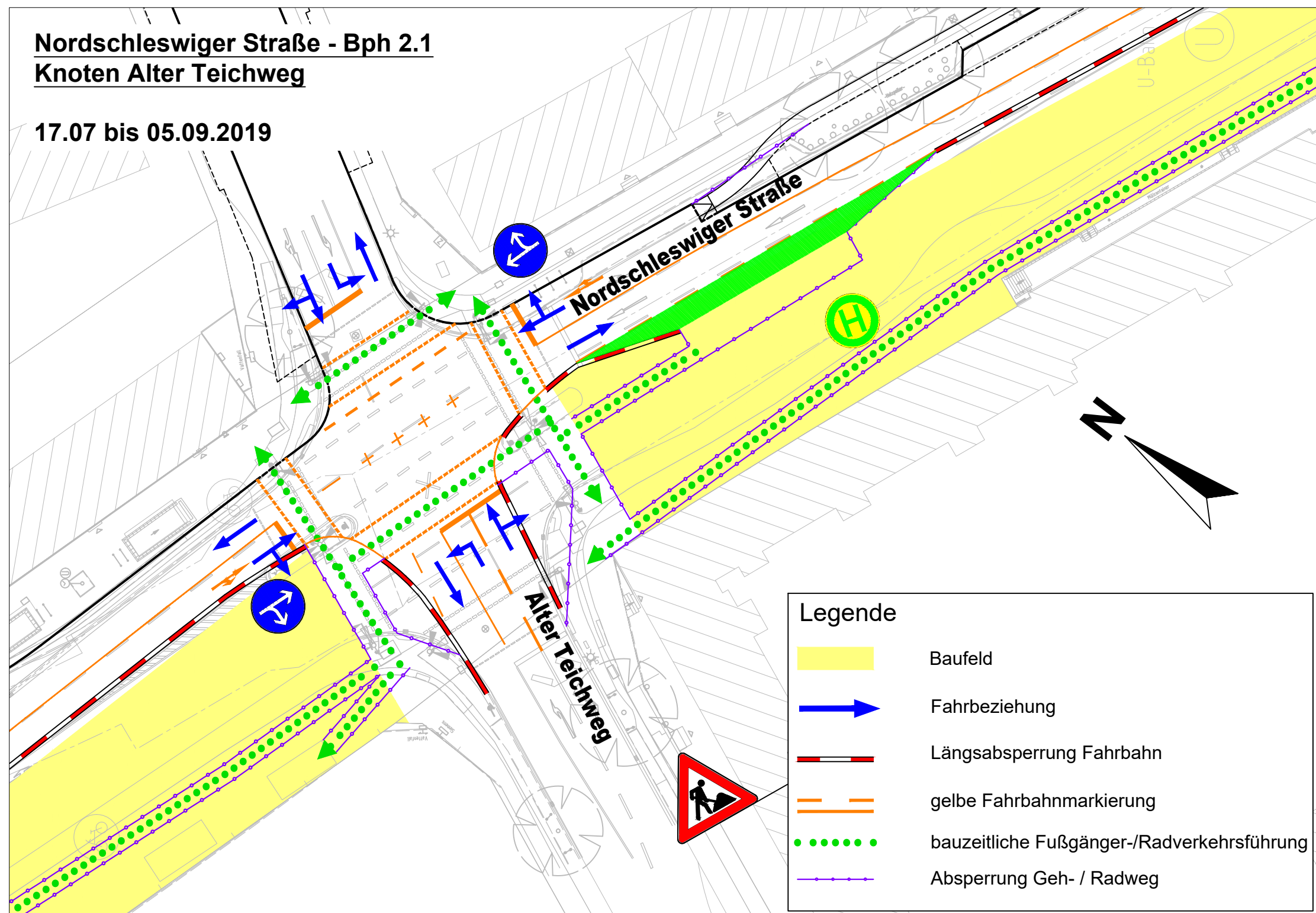




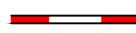



Nordschleswiger Straße - Bph 2.1

Knoten Alter Teichweg

17.07 bis 05.09.2019



Legende

-  Baufeld
-  Fahrbeziehung
-  Längsabspernung Fahrbahn
-  gelbe Fahrbahnmarkierung
-  bauzeitliche Fußgänger-/Radverkehrs-führung
-  Abspernung Geh- / Radweg